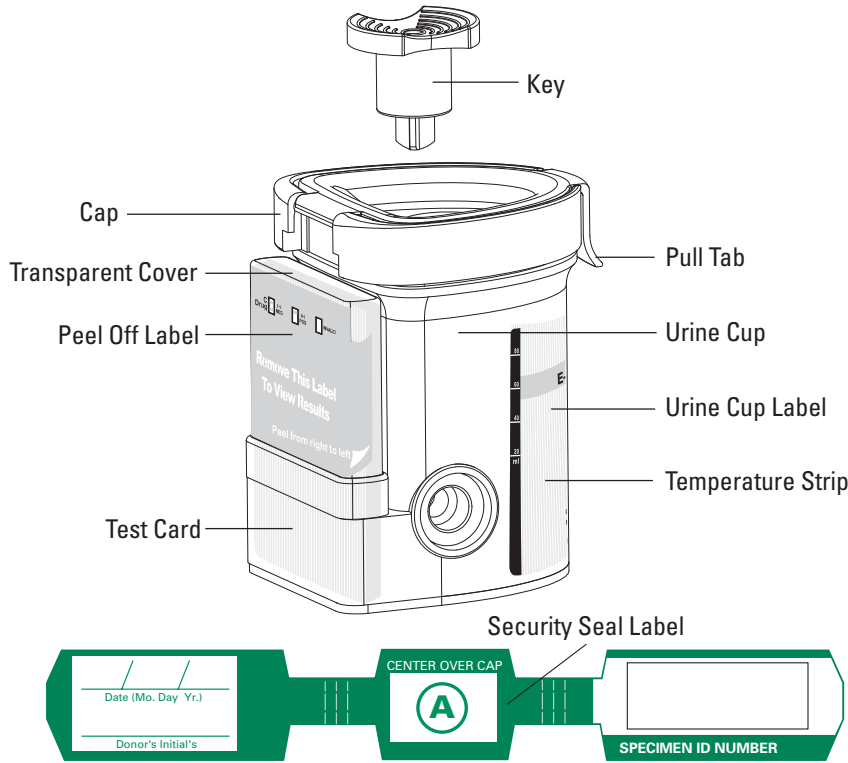
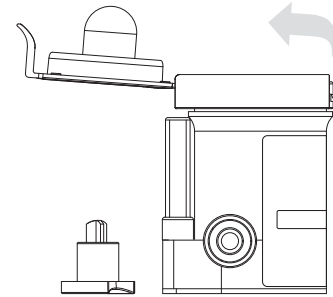


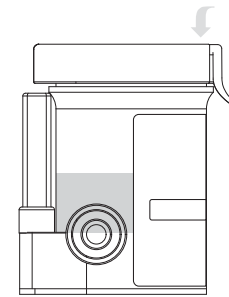
Express Results™ Integrated Multi-Drug Screen Cup with Adulteration Test – Procedure Card



1 Remove the key by twisting it from the center of the cup cap. Open cap with the Pull Tab. (Key is held by Collector.)



2 Donor provides specimen and Collector secures cap. Note: Secure cap by pressing down on the Pull Tab until an audible click is heard.

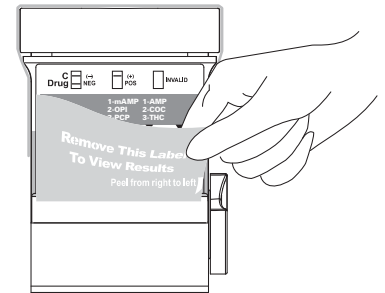
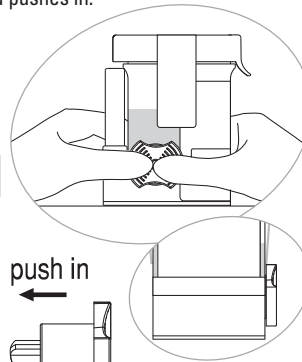
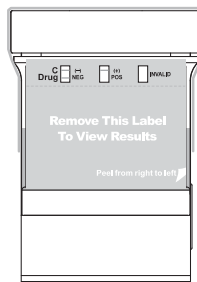


3 Check cap for tight seal. Collector places the security seal over the cap. Collector dates and donor initials the security seal. Note: If a Quest Diagnostics Custody and Control Form (CCF) is used, the tamper-evident label at the bottom of the CCF is used to seal the specimen.

4 On a flat surface, Collector inserts key and pushes in.

5 Peel off the label to view results.

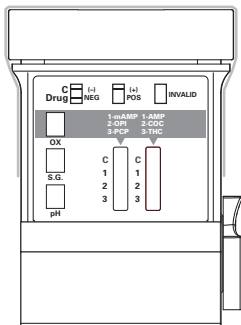
Place security seal over cup



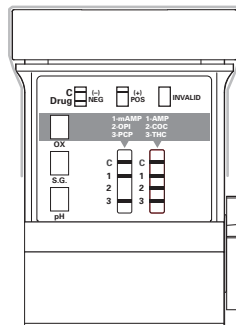
6 Read adulteration test results (OX, S.G., pH, on left) between 3-5 minutes.

7 Test is read while in reaction well.

8 A photocopy of the results can be made, if desired, by placing the entire cup with card face down on the copier.



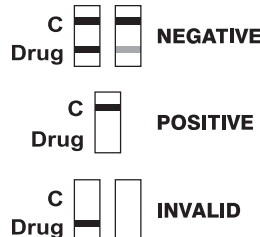
■ Adulteration Strips
See color chart and package insert for interpretation.



Example: test shows positive for OPI (left hand drug test strip).



Read results at 5 minutes.



All positive results are presumptive and should be confirmed by an alternative method (e.g. GC/MS).

